

Cambridgeshire Bird Club



E-Bulletin 35 May 2016

(The records in this bulletin are unchecked and may be revised at a later date)



Mallard brood at St Ives: photo by Nigel Sprowell

HEADLINES

RED-BREASTED MERGANSER Paxton Pits a male on 13th.

SPOONBILL Fen Drayton Lakes on 7th.

WHITE STORK* Soham Mere a flyover on 17th - this may be the bird that escaped from rehabilitation at Welney in March.

STONE CURLEW Ouse Washes on 14th.

TEMMINCK'S STINT Paxton Pits on 6th.

WHITE-WINGED BLACK TERN* March Farmers 2 on 14th, Grafham Water on 18th.

HOOPOE Fen Drayton Lakes briefly on 20th.

RED-FOOTED FALCON* a female on 30th.

GREAT REED WARBLER* Paxton Pits 14th to the end of the month and into June.

WOOD WARBLER* Paxton Pits on 4th.

Other records

All records below refer to the month at the head of the E-bulletin and where no numbers are given the record relates to single birds.

Where there is an asterisk after the name of the species this indicates that it is necessary to send a description to the County Recorder before the record will be accepted.

Weather

At last a kinder month with some warm sunshine, very warm for a few days early in the month, and mainly southerly or westerly airstreams. This led to a more obvious arrival of migrants (see the number of waders on 10th). As well as being warm the month was largely dry and places with shallow standing water dried out during the month until in the final days a storm passed over the county with wind and rain aplenty and temperatures more akin to winter.

Wildfowl

Mute Swan Burwell Fen maximum 12 on 4th, Trumpington Clay Farm 7 on 17th.

Whooper Swan March Farmers on 14th - presumably an injured bird.

Greylag Goose Burwell Fen maximum 62 on 4th - several broods later in the month, Wicken Fen (Baker's Fen) maximum 48 on 8th - 5 broods with 23 young, Trumpington Clay Farm 14 on 17th.

Canada Goose Burwell Fen maximum 28 on 4th - 2 broods later in the month, Wicken Fen (Baker's Fen) maximum 9 on 8th, Trumpington Clay Farm 8 on 17th plus a brood of 4.

Barnacle Goose Burwell Fen on 4th, Paxton Pits on 30th.

Egyptian Goose Paxton Pits a pair on 3rd.

Shelduck *reported from:* Burwell Fen (4 pairs), Grafham Water (bred with a pair and 5 young seen on 24th), Paxton Pits and Wicken Fen (10 - 4 pairs).

Mandarin Berry Fen on 7th - 13th, Grafham Water on 18th.

Wigeon Burwell Fen on several dates - maximum 5 on 5th, Berry Fen 2 on 9th, Paxton Pits a drake on 18th.

Gadwall Wicken Fen (Baker's Fen) maximum 8 on 8th, Burwell Fen maximum 56 on 29th.

Mallard Wicken Fen (Baker's Fen) maximum 35 on 8th, Burwell Fen maximum 44 on 29th.

Pintail Burwell Fen on 2nd and 4th, 2 on 13th and 17th.

Garganey *reported from:* Berry Fen (3), Burwell Fen (4), Fen Drayton Lakes (4), March Farmers (4), Ouse Washes RSPB (3) and Wicken Fen.

Shoveler Paxton Pits a pair on 4th, Burwell Fen maximum 10 on 4th, Wicken Fen (Baker's Fen) maximum 4 on 8th.

Pochard Paxton Pits 4 on 5th, a drake on 9th, Berry Fen 4 on 9th, Burwell Fen on 14th.

Tufted Duck Burwell Fen maximum 22 on 4th, Trumpington Clay Farm 16 on 17th.

Goldeneye Fen Drayton Lakes on 7th, Grafham Water a female on 15th and a 'young male' on 25th.

Gamebirds

Grey Partridge Cam Washes Waterbeach on 6th, Burwell Fen 2 on 17th, Wicken Fen on 23rd.

Quail Grafham Water one heard on 6th - first of the year, another or the same on May 18th.

Cormorants

Cormorant Burwell Fen maximum 10 on 14th.

Egrets and herons

Bittern reported from a number of fenland sites.

Little Egret *reported from:* Burwell Fen (8), Cam Washes Upware, Cam Washes Waterbeach (2), Cottenham, Fowlmere NR, Ouse Washes (30+ on 14th), Paxton Pits (4) and Wicken Fen (4).

Great White Egret Burwell Fen on 14th, Ouse Washes RSPB on 14th.

Grebes

Little Grebe Burwell Fen maximum 5 on 4th - 2 pairs, Trumpington Clay Farm 3 on 17th.

Great Crested Grebe Burwell Fen maximum 6 on 29th 2 pairs + 2 young, Trumpington Clay Farm a pair on 17th, Whittlesford GP a pair on 18th.



Great Crested Grebe at Fen Drayton Lakes: photo Colin Brown.

Red-necked Grebe* Farcet (at Crown Lakes) on 6th - 7th.

Black-necked Grebe Ferry Meadows CP 2 on 21st.

Raptors

Red Kite Fulbourn on 4th, Paxton Pits on 4th, Berry Fen on 7th, Great Fen on 13th, Wicken Fen on 16th, 22nd and 24th, Over on 17th, Cam Washes Waterbeach on 18th, Paxton Pits on 18th.

Marsh Harrier *reported from:* Cam Washes, Cottenham, Needingworth GP, Paxton Pits and Wicken Fen (6).

Buzzard *reported from:* Cambridge Research Park, Chippenham Fen, Fowlmere NR, Great Shelford, Little Shelford, Lolworth, Needingworth GP, Pampisford, Sawston (3) and Wicken Fen.

Osprey Grafham Water on 5th, Burwell Fen a flyover on 8th, Little Wilbraham Fen a flyover on 8th, Whittlesford GP a flyover on 11th, Ferry Meadows CP on 22nd.

Rails and crane

Water Rail *reported from:* Chippenham Fen and Paxton Pits.

Coot Wicken Fen (Baker's Fen) maximum 13 on 8th Burwell Fen maximum 70 on 29th.

Common Crane Ouse Washes RSPB 2 on 9th, 3 on 14th, Wimblington 2 flying over on 12th.

Waders

Avocet Cam Washes Upware 10 on 3rd, Cam Washes Waterbeach 5+ on 6th, 8 on 18th and 22nd, 15 on 25th, Paxton Pits 2 on 3rd, Ouse Washes RSPB 19 on 9th, 16+ on 14th, Grafham Water 3 on 9th, Burwell Fen 2 on 12th, Fen Drayton Lakes on 12th, Maxey Pits on 26th.

Oystercatcher *reported from:* Burwell Fen, Cam Washes, Fen Drayton Lakes (2), Grafham Water (2) and Paxton Pits (4).

Grey Plover Burwell Fen 2 on 6th, one on 13th, Paxton Pits on 6th, 2 on 7th, 3+ on 10th, one on 13th - 14th, March Farmers on 7th, 14 on 9th, Fen Drayton Lakes on 7th - 9th 4 on 10th, Eldernell on 9th, Ouse Washes RSPB 5 on 9th, 7 on 10th, 6 on 11th, one on 14th, Berry Fen 6 on 10th.

Lapwing Trumpington Clay Farm 6+ on 17th, Wicken Fen (Baker's Fen) maximum 7 on 8th, Burwell Fen maximum 8 on 29th, Cam Washes Waterbeach 15 on 18th.

Little Ringed Plover Fen Drayton Lakes on 4th, Paxton Pits 1-2 on several dates, Kingfishers Bridge 2 on 6th, Burwell Fen on 14th, 2 on 21st, Wicken Fen on 16th, 17th, and 2 on 26th, Grafham Water on 21st.

Ringed Plover a distinct passage of 'tundra' subspecies as follows: March Farmers 19 on 6th, Ouse Washes 60 on 9th, 69 on 10th, c70 on 11th, one on 14th, Grafham Water 2 on 9th, one on 10th and 15th, Elsewhere - Burwell Fen on 6th, 21st - 22nd, Paxton Pits on 9th, 6+ on 10th, Wicken Fen 2 on 16th, 9 on 17th.

Whimbrel Paxton Pits on 3rd, 6 on 10th, Fen Drayton Lakes on 6th, March Farmers 2 flying over on 14th, Grafham Water a flyover on 14th.

Black tailed Godwit Paxton Pits on 9th, Ouse Washes 16 on 11th, Berry Fen on 13th, Cam Washes Waterbeach 3 on 18th, 7 on 22nd.

Bar-tailed Godwit Eldernell on 2nd, Paxton Pits on 5th - 8th, 2 on 10th, March Farmers on 9th, Fen Drayton Lakes on 10th.

Turnstone Paxton Pits on 8th, 4 on 10th, Ouse Washes on 10th.

Knot March Farmers 2 on 6th, Ouse Washes 2 on 9th - 10th, Berry Fen on 10th.

Ruff Nene Washes 3 on 5th, Ouse Washes 12 on 9th - 10th, 21 lekking males on 11th, Berry Fen on 13th.

Sanderling Grafham Water 2 on 9th, 10 on 10th, one on 12th, 5 on 13th, 3 on 14th and 15th, 2 on 18th, 3 on 19th, then 19 on 21st, single on 24th, 5 on 25th, Paxton Pits 3 on 10th, one on 11th, 2 on 13th, one on 15th, Maxey GP on 10th.

Dunlin *reported from:* Berry Fen, Burwell Fen (3), Fen Drayton Lakes, Grafham Water (2), Nene Washes March Farmers (5), Ouse Washes (5), Paxton Pits (11) and Wicken Fen (3).

Little Stint Ouse Washes on 9th.

Common Sandpiper Fen Drayton Lakes 2 on 2nd, Cam Washes Waterbeach on 6th, 10th, Fen Drayton Lakes on 6th, Ouse Washes 2 on 9th, Berry Fen on 10th, Burwell Fen on 10th, 12th and 14th, Grafham Water on 9th, 4 on 10th, one on 11th & 13th, Wicken Fen on 12th, Paxton Pits on 13th.

Spotted Redshank March Farmers on 6th and 9th, Cam Washes Waterbeach on 6th, Eldernell on 9th.

Greenshank Eldernell 2 on 2nd, Paxton Pits on 3rd, 4 on 5th, one on 6th - 8th, 2 on 9th, 3 on 11th, 2 on 13th - 14th, one on 15th, Nene Washes March Farmers 5 on 5th, 6 on 6th - 7th, 14 on 8th, 12 on 9th, 3 on 14th, Kingfisher Bridge on 6th, Berry Fen on 7th, Eldernell 10 on 9th, Fen Drayton Lakes on 9th - 14th, Ouse Washes RSPB 2 on 9th, 15 on 10th, one on 14th, Cam Washes 5 on 10th, Wicken Fen 3+ on 10th, one on 8th, 8 on 12th, one on 15th - 16th and 21st, Berry Fen on 10th, Burwell Fen 2 on 14th and 17th, Cam Washes Waterbeach on 18th, 2 on 25th.

Wood Sandpiper Cam Washes Upware on 2nd, Nene Washes March Farmers 7 on 5th, 2 on 9th, Maxey GP on 5th, Burwell Fen 2 on 5th and one on 6th, Wicken Fen Baker's Fen 2 on 6th, Berry Fen on 7th, Ouse Washes 3 on 9th, one on 10th, 2 on 11th.

Redshank *reported from:* Burwell Fen (mostly 1-2 but 18 on 10th), Cam Washes (6), Grafham Water, Paxton Pits (mostly 1-2 but 23 on 10th) and Wicken Fen (7).

There was clear evidence of Redshank passage on the 10th with the 18 reported from Paxton Pits (5pm) seen to depart North East and then 18 reported at Burwell/Wicken Fen (6pm) and the

timing of the sightings suggest the same flock, in addition 18 were seen in Bedfordshire earlier in the afternoon. Looking at the table below it shows that there was a significant movement of waders of many species on that day.

Woodcock roding birds as follows: Chippenham Fen (6+ and 3 more on the ground), Fordham Wood (2), Monks Wood, Wicken Fen (2).

Snipe reported from: Chippenham Fen, and Wicken Fen(3+ drumming birds on 26th).

Summary of wader passage in May

	1	2	3	4	5	6	7	8	9	10	11	12	13	14	15	16	17	18	19	20	21	22	23	24	25	26	27	28	29
GPI						5	4	2	21	23	6		2	2															
RPI						20			3	74	70			1		2	9				1								
Whim		1	1			1				6				3															
Bar		1			1	1	1	1	1	3																			
Ru			3						12	12	21		1									1							
Sand									2	12	1	1	7	3	4			2	3					1	5				
Dun		5+				8	1		7	13		2	1	1			3				1	3	1						
CS		2				2			3	9	1	2	2	1															
Gsk		2	1		9	8	8	16	25	32	3	9	2	9	2	1	2	1			1				2				
WS		1			8	3	1		5	1	2																		

From the top: Grey Plover, Ringed Plover, Whimbrel, Bar-tailed Godwit, Ruff, Sanderling, Dunlin, Common Sandpiper, Greenshank, Wood Sandpiper.

Terns and gulls

Little Tern Grafham Water on 25th.

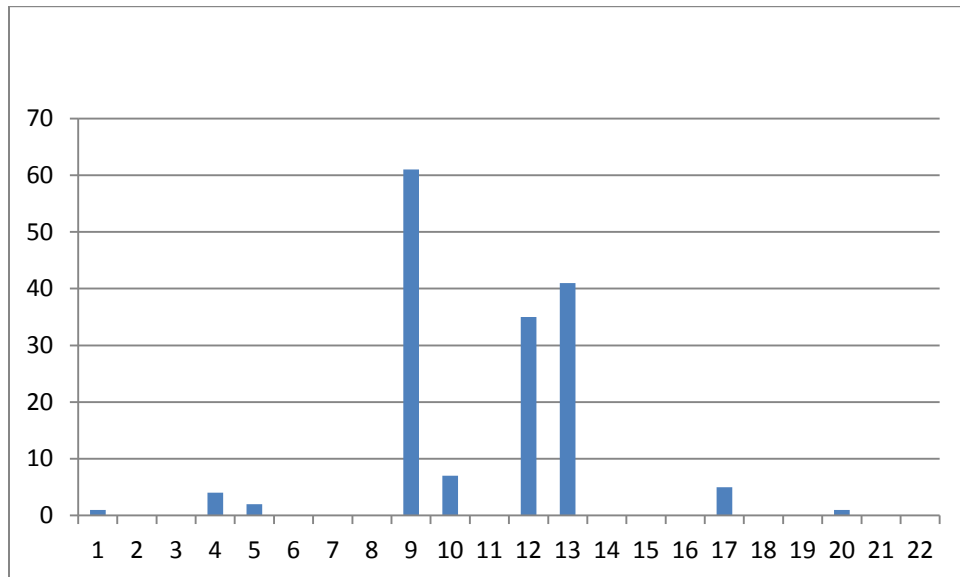
Black Tern Burwell Fen 2 on 5th, 9 on 6th, one on 11th - 13th, Fen Drayton Lakes 2 on 5th, 4 on 6th, 4+ on 7th, one on 8th, 4 on 10th, one on 12th, another on 13th & 14th, Paxton Pits on 5th moving through maximum 37, 10 on 8th, Grafham Water 31 on 6th, 7 on 8th, 4 on 9th, 2 on 13th, one on 14th and 15th, Ferry Meadows CP 5 on 6th, one on 13th, Barelycroft GP 4 on 7th, March Farmers on 9th, 15 on 14th, Cam Washes on 10th, Ouse Washes on 10th, undisclosed site in South Cambs 4 on 11th, Berry Fen 7 on 13th, Meadow Lane pits on 14th.

Common Tern reported from: Berry Fen (16), Burwell Fen (4), Cambridge Midsummer Common (2), Cambridge Research Park, Cam Washes, Grafham Water (maximum 54 on 5th), Kingfishers Bridge (15), Paxton Pits (maximum 93 on 8th), Trumpington Clay Farm (8) and Wicken Fen.



Black Terns at Paxton Pits: photo by Martin Davis.

Arctic Tern Paxton Pits on 2nd, 2 on 5th, one on 14th, Fen Drayton Lakes 2 on 5th & 6th, c12 on 10th, one on 13th & 14th, Grafham Water 5 on 10th, 7+ on 11th, 10+ on 13th, 29 on 14th, 5+ on 18th, Berry Fen 14 on 10th, Peterborough North Bank 13 flyovers on 10th, Ouse Washes 16 flyovers on 10th, Burwell Fen on 10th, 21st, Ely BF 21 flying over on 13th, March Farmers on 14th.



Arctic Tern passage in May, note the peak on 10th which coincides with the peak wader passage.

Kittiwake Paxton Pits on 5th, and another briefly on 15th.

Black-headed Gull Trumpington Clay Farm 69 on 17th, Burwell Fen maximum 35 on 29th.

Little Gull Paxton Pits on 5th & 6th, Grafham Water on 7th, March Farmers an immature on 31st.

Mediterranean Gull Nene Washes on 20th.

Lesser Black-backed Gull Burwell Fen maximum 6 on 4th, Wicken Fen on 21st.

Herring Gull Burwell Fen maximum 2 on 29th.

Caspian Gull Paxton Pits a 2 c.y. on 10th - 23rd (maybe 2 on 23rd), March Farmers on 22nd, Burwell Fen on 25th.

Yellow-legged Gull Paxton Pits on several dates up to 18th, Cam Washes 4 on 25th.

Doves, cuckoo, owls, kingfisher and woodpeckers

Turtle Dove *reported from:* Barleycraft GP (3), Croydon, Fen Drayton Lakes, Fowlmere NR, Girton, Grunty Fen, Needingworth GP (3), Over (2), Paxton Pits, Ramsey and Upwood.

Cuckoo *reported from:* Berry Fen (2), Burwell Fen (3), Chippenham Fen, Eldernell, Fen Drayton Lakes (3), Great Fen (5+), Landbeach, Littleport May Farm, Little Wilbraham Fen, Monks Wood (2) Paxton Pits (4), Wicken Fen (5) and Woodwalton Fen (2).

Barn Owl *reported from:* Burwell Fen (2), Cam Washes Upware/Waterbeach (2), Fen Drayton Lakes (2) and Wicken Fen (several pairs).

Little Owl *reported from:* Woodwalton Fen.

Tawny Owl *reported from:* Fen Drayton Lakes.

Short-eared Owl Burwell Fen on 2nd, 5th, 2 on 25th, Fen Drayton Lakes on several dates maximum 2 on 7th, Castor Hanglands on 6th, Clopton on 7th, Yaxley on 7th and 23rd, Paxton Pits on 10th, Lolworth on 11th, March Farmers 3 on 14th, Ouse Washes RSPB on 14th, Littleport May Farm on 18th.



Little Owls : photo by Colin Kirtland.

Swift a county wide arrival on 6th with many observers reporting their first contact with groups of local birds, Burwell Fen 20 on 10th, c200 on 14th, 58+ on 17th, 120 on 25th, c300 on 29th.

Kingfisher *reported from:* Burwell Fen, Cam Washes Upware, Great Fen, Haddenham (2), and Wicken Fen.

Falcons

Merlin Nene North Bank a male on 9th, Wicken Fen on 13th, - last of the winter.

Hobby *reported from:* Berry Fen, Burwell Fen (3), Chippenham Fen, Eldernell (5+), Fen Drayton Lakes (3), Fowlmere NR, Grafham Water (2), Great Fen (5+), Littleport May Farm (2), Lolworth, March Farmers, Orton BP (4), Ouse Fen (7), Ouse Washes, Paxton Pits (7) and Wicken Fen (9+).

Peregrine *reported from:* Cambridge several sites, Cottenham, Ouse Washes and Wicken Fen.

Corvids

Jackdaw Burwell Fen maximum 19 on 4th, Wicken Fen (Baker's Fen) maximum 35 on 8th.

Carrion Crow Burwell Fen maximum 9 on 4th, Wicken Fen (Baker's Fen) maximum 13 on 8th

Raven Castor Hanglands 2 flying over on 14th, Paxton Pits a flyover on 14th and 15th, Southey Wood 2 on 22nd.

Tits

Marsh Tit *reported from:* Great Fen, Paxton Pits,

Bearded Tit Wicken Fen 6 ringed during the month.

Hirundines, and warblers

Cetti's Warbler *reported from:* Cambridge Research Park, Burwell Fen, Kingfishers Bridge, Needingworth GP, Orton BP (5), Paxton Pits (3), Wicken Fen (4) and Woodwalton Fen (3).

Garden Warbler *reported from:* Castor Hanglands (13), Ferry Meadows CP (12), Great Fen (5), and Woodwalton Fen (2).

Grasshopper Warbler *reported from:* Castor Hanglands, Chippenham Fen (5), Eynesbury, Fen Drayton Lakes (2), Grafham Water, Over, Wicken Fen (3) and Woodwalton Fen (5+).



Swallow at Paxton Pits: photo Phil Smith.

Thrushes and Spotted Flycatcher

Mistle Thrush *reported from:* Chippenham Fen and Paxton Pits.

Ring Ouzel Moonshine Gap on 1st, Little Wilbraham on 1st.

Spotted Flycatcher Paxton Pits on 8th - first of the year, Monks Wood on 15th, Southey Wood 6 on 22nd.

Nightingale *reported from:* Castor Hanglands (22), Fen Drayton Lakes, Grafham Water, Orton BP, Paxton Pits (8) and Wicken Fen (3-4).

Starts and chats

Redstart Eldernell on 1st.

Whinchat Maxey GP 2 on 3rd.

Stonechat Paxton Pits on 9th, Wicken Fen on 5th, 15th and 16th, a pair on 30th.

Wheatear Cottenham on 1st, Little Wilbraham 3+ on 1st, Blackbush 5 on 2nd, Paxton Pits a pair on 2nd, a single on 5th, Over on 2nd, Burwell Fen on 5th, Fen Drayton Lakes a male on 6th, Great Fen 3 on 7th.

Wagtails and pipits

Yellow Wagtail Littleport May Farm c30 on 18th.

Grey Wagtail *reported from:* Foxton, Great Shelford, Hinxton and Paxton Pits.

Pied Wagtail (*White Wagtail*) Fen Drayton Lakes on 8th.

Tree Pipit Over a flyover on 2nd.

Finches and buntings

Brambling Kimbolton a pair on 1st - latest date?

Siskin *reported from:* Woodwalton Fen.

Linnet Littleport May Farm 60 on 18th.



Linnet male at Fowlmere NR: photo by Gary Thornton.

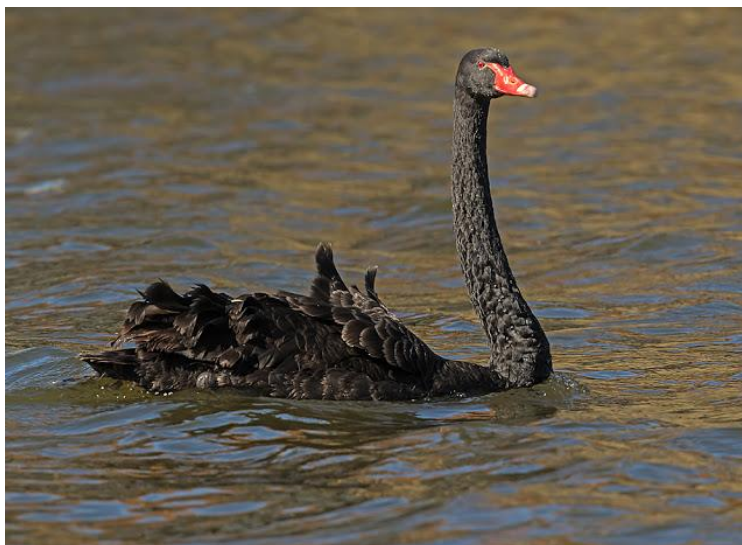
Crossbill Swaddywell Pit 3 flew over on 15th.

Corn Bunting Littleport May Farm c35 on 18th.

Exotica

Black Swan St Neots on 4th.

Ross's Goose still in the Wicken/Burwell Fen area.



Black Swan at St Neots : photo by Nigel Sprowell.

Contributors:

Colin Addington, Martin Amos, Malcolm Ausden, Louise Bacon Stuart Ball, Richard Bashford, Andy Bayes, Guy Belcher, Peter Bircham, Will Bowell, Richard Broughton, Chris Brown, Ian Burfield, Howard Butler, Dave Chambers, Ben Craig, Nick Davies, Martin Davis, Ian and Sheila Dickerson, Brendan Doe, Steve Dudley, Ian Ellis, Mike Everett, Mike Foley, Don Gardener, Ian Grant, Dean Harlow, James Hanlon, Andy Hannaford, Mark Hawkes, David Heath, Jon Heath, Chris Hewson, Mark Hill, Michael Holdsworth, David Hopkins, Neil Howard, Malcolm Housden, Richard Jackson, Andy Jennings, Colin Kirtland, Charlie Kitchin, Rob Law, Vince Lea, John Lindsell, Tony Lowe, Paul Mason, Matt Mellor, Steve Mumford, Vince Lea, Martin O'Leary, Daniel Osborne, Dave Palmer, Neil Parkin, Richard Patient, Mark Peck, Rob Pople, Duncan Poyser, Graeme Reed, Laurence Rose, John Saunders, Bill Simmonds, Clive Sinclair, Jonathan Taylor, Paul Taylor, Richard Thomas, Chris Thorne and the Wicken Fen Group, Bob Titman, Andrew Tongue, Calum Urquhart, Hugh Venables, Luke Wake, David Walsh, Mark Ward, Robin Ward, Matt Webb, Mike Weedon, Jamie Wells, Steve West, Kevin Wilson, David Withrington, Ken Wolstencroft, Hugh Wright, Julian Young, and Christoph Zöckler.

WICKEN FEN (BIRD RINGING) GROUP Brief news for May 2016

There were netting sessions at the Fen on 8 different days in May.
The month's ringing total was 427.

Cuckoo	5	Lesser Whitethroat	1
Barn Owl	6	Whitethroat	2
Kingfisher	1	Grasshopper Warbler	3
Jackdaw	7	Sedge Warbler	14
Blue Tit	193	Reed Warbler	42
Great Tit	54	Wren	9
Bearded Tit	6	Blackbird	6
Cetti's Warbler	7	Song Thrush	2
Long-tailed Tit	3	Robin	9
Chiffchaff	13	Duncock	8
Willow Warbler	1	Chaffinch	1
Blackcap	25	Bullfinch	3
Garden Warbler	1	Reed Bunting	5

Old birds retrapped during the month were:

Blue Tit X876406 at 6y 0m,
Blackbird LB03588 at 5y 7m,
Reed Warbler L505240 at 4y 11m,
Blackcap L504721 at 4y 1m,
Robin Y113943 at 4y 0m and Great Tit Y409227 at 3y 7m.

Uncommon breeding birds

Writing up my section of the Systematic List for the Annual Report it is noticeable how few records the Club receives of proven breeding from uncommon species such as owls or things like Kestrel or Grey Wagtail. Not exotic but nevertheless interesting, especially since these kind of species are subject to obvious population variations.

Just a reminder of the simple ways in which you can establish breeding using the Atlas criteria.

A pair in territory,

Copulating pair,

A nest site (obviously), but this can also be established by distraction behaviour of adults, you don't have to locate the nest.

A bird carrying food.

Recently fledged young - particularly easy in water birds with precocial young.

In whatever way you submit your records (birdtrack - use the breeding codes, to the Recorder etc), adding 'breeding pair' or 'carrying food' or 'brood of xx' enhances the Clubs records no end and many of these criteria are things you see without any effort.

Friday 8th July, Roswell Pits

A guided walk with the Ely birders who know these sites well. No need to book. Meet at 7pm at Kiln Lane, CB7 4TT.

Friday 12th August, Paxton Pits (north end)

by arrangement, a trip to the north end of Paxton Pits with site ranger, Jim Stevenson. Start time 7pm. Meeting place will be provided to those who book, but expect a reasonable walk to be part of this visit. Book with Louise Bacon (recorder@cambridgebirdclub.org.uk); places limited to 15.



Photo by Colin Brown